

ROCHESTER

ORIENTEERING



The Wild Times

December 2021

ROC Helpline: (585) 310-4ROC
Website: roc.us.orienteering.org
Find us on Facebook and Meetup!

THE OFFICIAL NEWSLETTER OF THE ROCHESTER ORIENTEERING CLUB

ROC President's Corner.... By Steve Tylock

Transitions

Here we are on the brink of the end of one year and the beginning of another - a transition. The club has done a fine job of stepping up from solo orienteering events to a modest set of regular events this year. By all accounts well attended and enjoyed safely. The trick will be to continue to ramp up the ability to put on an event, and have that event be well attended. I'd like to thank all of those that have helped direct and set courses as well as the day-of volunteers that help us run them. We had some first time volunteers setting courses! I do feel called to mention Linda Kohn. She didn't just set one or two courses over the year, but she designed four different events. Thank you - you're a hero. I also need to tip my hat to Tyler Borden for running timing throughout the year.



And thank you to everyone that plays a part in the variety of different non-event roles for the club - we really do need everyone and wouldn't be the same otherwise. The challenge will be to follow this year with a full year of programs and events in 2022. And to that point, we're looking to start the year off with a bang - two different national events on the weekend of May 7-8. A nationally ranking event the 7th, at Harriett Hollister and The Billygoat the following day at Letchworth. Mark your calendars if you haven't already!

Club Leadership

While it isn't known exactly who at the time of the writing of this, but there will be a new president for the club for 2022. I can accept only the bare facts that the club leadership held the meetings we needed to hold this year - three throughout the year and **a final web meeting to end the year on December 5th at 3:00 pm on Zoom.** I'm not one to have a grand vision and design for how the year might go or changes the club might see - I'm happy to open the doors to those that have ideas and initiative to get some things done and cheer them along. This year, perhaps like last, it is good enough to say that we've made it - and had some fun in the process!

Navigation

There is a trick to orienteering where you need to use broad skills to get from where you are to "over there", then deftly navigate to the control circle and finally put your eyes on the control flag. Each of these phases uses different skills, and if you're not careful, you might just spend too much time on the details to really make speedy process, shoot past your target in haste, or fail to notice the details at the very end. Switching between skills is something we all need to work at. Yes, I do see parallels between orienteering and life... And so, I salute everyone and look forward to more time out in the woods as this blue ball of energetic people swings around the sun one more time.

steve

2021 Club Officers, Committee Chairs & Directors

Board Officers:

President: Steve Tylock
stylock@gmail.com

President-Elect:

Past President: Mike Lyons
bones.lyons@gmail.com

Treasurer: Lindsay Worner
lindsay.worner@gmail.com

Secretary: Don Winslow
reroteacher@rochester.rr.com

Committee Chairs:

Membership: Lindsay Worner
lindsay.worner@gmail.com

Equipment: Rick & Dayle Lavine
rdlavine@frontiernet.net

Mapping Chair: Linda Kohn
Wornerkohn@gmail.com

Volunteer Coord.: Steve Tylock
stylock@gmail.com

Newsletter: Don Winslow
reroteacher@rochester.rr.com

Publicity Chair: Katie Dunn
kdunn7@ur.rochester.edu

Course Setting: Linda Kohn
Wornerkohn@gmail.com

Permanent Os: Richard Burgey
Nburgey@gmail.com

Permanent Os: Nancy Burgey
Nburgey@gmail.com

Website: Tyler Borden
tpb6816@gmail.com

Board of Directors:

Tyler Borden tpb6816@gmail.com

Stina Bridgeman
stina.bridgeman@gmail.com

Stephen Brooks skorpdogg@hotmail.com

Bob Bundy rbundy1@rochester.rr.com

Rukhsana Palmer
rukhsana.cofer@gmail.com

Ed Deller eddeller4@gmail.com

Heidi Hall hhall@rochester.rr.com

Gary Maslanka gmm650b@gmail.com

Rick Lavine rdavine@frontiernet.net

Lindsay Worner Lindsay.worner@gmail.com

Tom Rycroft crazychemboy@hotmail.com

Anne Schwartz anneschwz@yahoo.com

Steve Tylock stylock@gmail.com

Doug Hall doughall@rochester.rr.com

Zack Butler zack.j.butler@gmail.com

Katie Dunn kdunn7@ur.rochester.edu

Carl Palmer carl.palmer.phd@gmail.com

General Information on Local Courses

The club will no longer be using the OUSA “color” designations, but rather names based on difficulty. A description of the courses is as follows:

Name	Beginner	Advanced Beginner	Intermediate	Short Advanced	Advanced	Long Advanced
Approx. Distance	2-4 km	3-5 km	4-7 km	3-5 km	4-7 km	6-10 km
Number of Controls	4-12	5-12	8-12	8-12	8-12	8-15
Difficulty	Easiest	Easy	Medium	Hard	Hard	Hard

The **Beginner** course is intended to be easy enough for first-time participants after a short introduction to the sport. Control points are generally on trails or similarly easy-to-locate features.

The **Advanced Beginner** course is slightly more difficult than the beginner course. Control points are generally placed close to but not right at easy-to-find features, such as on a knoll that is 50 m away from a trail junction.

The **Intermediate** course requires more map-reading and course-planning skills than the advanced beginner course. Controls will generally have a good attack point, but the attack point may be more subtle than on the advanced beginner course, or the control will be placed further from the attack point. The route choice from one control to the attack point for the next control is often less obvious than on the advanced beginner course.

The **Short Advanced, Advanced, and Long Advanced** courses differ from each other only in length. At local parks, they are usually the most difficult course that can be set given the size and the terrain of the park. Map-reading, compass, and route-planning skills will be tested to a greater degree on this course.

Sometimes other courses may be offered, such as a Motala, a course which involves one or more map exchanges, a Trail Challenge (long course with easy control placement), a Line-O or Score-O.

The entry fees to ROC meets are \$6 per map for ROC members and \$10 per map for non-members. If several people enter as a group using the same map, the fee is still \$6 (members) or \$10 (non-members). There is a \$1 discount if you use Online Registration... see roc.us.orienteering.org. The beginner and advanced beginner courses are \$5 per map. A person or group can do a second course for \$2 additional charge.

Beginner instruction is available at most of our regular meets, and beginners are welcomed to join us!



Schedule – subject to change!

Rochester Area:

May 7, 2022	Middle Distance NRE at Harriet Hollister State Recreation Area
May 8, 2022	Billygoat at Letchworth State Park

Most events are not scheduled at this time. We plan on having more in-person meets. Please check our website for more details as they happen. If you would like to help set a course, whether it's a new course or revisiting a "vintage" course, please contact Steve Tylock.

Possibilities in 2022:

Mendon Ponds, Genesee Country Museum, Powder Mills, Camp Eastman, Genesee County Park, Webster, and Stony Brook SP????

Outside of Rochester:

CNYO	Check their website for details! http://cnyo.us.orienteering.org/
BFLO	Check their website for details! https://buffalo-orienteering.org/
EMPO	Check their website for details! https://empoclub.org/
NCO	Check their website for details! https://northcountryorienteering.org/

Permanent Course Finishers

We have courses at Webster Park, Durand Eastman Park, Mendon Ponds Park and Letchworth State Park. You can purchase maps at our events or on our website.

A Blast from the Past...

According to the June 2002 Wild Times edition, do you know who lost a shoe in the 2001 Fall Classic A Meet at Letchworth State Park? Not only did the shoe come off in the muck after jumping a small ditch, searching for it in each footprint never resulted in finding it! This person had an hour long walk back to the start stepping on stones, acorns, and cindered parts of the trails...

Answer on page 10

Puzzle Time



British O Zone ...

<https://www.britishorienteering.org.uk/page/challenges>

Answer on page 10

O Tips for Beginners

From OUSA's website... New to O? Go to <https://orienteeringusa.org/> and check out the information that is there for new orienteers. There are videos to watch on many skills that orienteers use. You will find information on the vocabulary used in orienteering and equipment you may want to purchase as you progress. There's even a FAQ section. If you want help with anything, please ask a member at the next meet! We're here to help!

Kolva Award Nominees



In 2009, ROC established this award in honor of Karl Kolva for members between the ages of 14 and 20 that meet the following criteria and are nominated by another ROC member.

1. Attendance and participation in age related orienteering events.
2. Service to the Rochester Orienteering Club.
3. Showing interest in improving his or her orienteering skills.
4. Demonstrating good citizenship and sportsmanship in other activities.

Please forward any nominees to the BOD!

Giving Back to Alasa Farms

Linda Kohn and Rick Worner spent a couple of hours helping a group of Genesee Land Trust volunteers reroute a creek and repair a culvert pipe. The creek was swollen from a heavy dose of rain the night before the work party. It was nice to be able to make some improvements on one of our orienteering maps. Randy Bond, the Alasa Farms project manager, really appreciated the help. The farm depends on volunteers and donations to operate the animal rescue operation and to maintain the property.

ROC at the Masters

Linda and Rick decided to attend the OUSA National Masters Championships at Lac de Mille State Park, two hours north of Minneapolis. The original plan was to drive out and visit a couple of friends on the way, but one friend had a possible Covid exposure so at the last minute we decided to fly instead of making the 18 hour drive.

The area was very similar to Mendon Ponds but with less climb and smaller glacial features. We expected some very technical orienteering with a need to take and follow accurate compass bearings and stay in close contact with the map. As it turned out the 2.5 meter contours and good visibility made it possible to move quickly through the woods. The area had many large swamps and small marshes that were very visible and were a big help with navigation.



Linda at the start

Ariel and Chaplin Fabry



Name - Ari and Chaplin Fabry

Hometown - Rochester: Chaplin is from Holley, and Ari is from Webster

Other family members - We have a dachshund named Blue who loves to hike but would slow us down on a course

Occupation/Grade in School - Chaplin is a high school history teacher and Ari does support for a local software company

Other Hobbies - We like to go climbing and hiking.

When did you start orienteering? Ari used to tag along with her grandparents, Tom Cornell and Sandra Lomker, when she was a kid. We just started attending meets together regularly this year.

What level are you competing at? Intermediate

The turnout was smaller than usual given the continued concerns about Covid, but the competition was still good in many categories. Linda had good runs both days and the best times on the Brown Y course. The Brown X course had more competitors and the times were bunched closer together in many of the categories.

The weather was great on Saturday with sunshine and warm temperatures. It rained Saturday night, but cleared in time for the Sunday event.

The area has a rich history of Native American settlements and there were signs throughout the park highlighting significant historical events. One of the prizes was a bag of wild rice grown in the area by the local Native American Coop.

It was nice to see many of our orienteering friends and to spend a couple of days in a beautiful park.

Results

https://a06af1ff-d331-4661-b1bf-8176fba5c82b.filesusr.com/ugd/0bc8c4_b21ff58d01284607957286816f44d5dc.pdf

Map for Linda's course.

https://a06af1ff-d331-4661-b1bf-8176fba5c82b.filesusr.com/ugd/0bc8c4_cabd5219f00e46d6b594de8c0806d243.pdf

Get to Know the ROC

If you have an idea for a ROC member you'd like to see mentioned in this series, please contact Don Winslow.

What do you love about orienteering? We really like getting to see parks in new ways.

Favorite park in Rochester to orienteer in... I

don't think we know yet!

Farthest from Rochester that you've

orienteered... Genesee County Park. The meet this year was our first time there and we are really looking forward to going back.

Favorite orienteering experience... Getting to see some horses at Alasa Farms was a really great

bonus!

Any future orienteering goal you may have... We

would eventually like to work our way up to the advanced courses.

Overlook NRE & Letchworth Goat

On May 7th and 8th, 2022, the Rochester Orienteering club will offer an exciting weekend combination of the Overlook NRE middle on Saturday and the 42nd annual mass start Billy Goat and Kid Goat on Sunday.

On Saturday we will host a one-day **NRE middle distance event** on a new map at Harriet Hollister Spencer State Recreation Area, and on Sunday we will offer the 42nd annual Billy Goat. Some history, <http://www.billygoat.org/articles.html>

The plan at this point is to start the Saturday event at 1PM to give people an opportunity to drive in on the morning of the event. Harriet Hollister is around 40 minutes south of Rochester, NY overlooking Honeoye Lake. It has a moderate trail system, interesting contour detail and very open woods.

Mark Dominie is the mapmaker. Stina Bridgeman will be the course setter.

The Billy Goat will be a mass start at 9AM on the Letchworth West map that was updated by Mark Dominie in 2019. The length of Billy Goat will likely be in the range 13-15K with an adequate amount of climbing to justify the name. A shorter "Kid" 5-7K, will be offered for all those people who are tasked with driving home after the event. A free lunch of soup and sandwiches will be offered after the event if Covid conditions permit. BG t-shirts will be awarded to all finishers who beat the three hour and 30 minute time limit. The courses will close at 2PM. Tom Rycroft is the course setter.

Unfortunately, the park is not open at this time of year for camping or cabin rentals. Other commercial sites near the park,

<https://theridgecampground.com/> , <https://www.wodstreamcampsite.com/>

Motels south of Rochester are about a 45 minute drive and there are a limited number of motels closer to the park. With the early start on Sunday people should be able to head home by early afternoon.

We will likely wait until after January 2022 to open registration. Looking forward to welcoming all the young and old "goats" from all over the US and Canada.

Rick Worner, Meet Director

Irondequoit Bay West Park

August 22, 2021

We returned to the park by the bay again but this time for standard races instead of its more typical Score-O. It was a warm and humid day, but we fortunately avoided Hurricane Henri that was busy attacking downstate. And we managed slip past the hive of bees concerned about their damaged home in a newly fallen tree close to a control!

An impressive six different races for this event: white, yellow, orange and three separate individual advanced courses that could be combined to make brown (1), green (2) and red (3). I guess we are reverting to the old color scheme names for races (which I, for one, much prefer.) We had 67 entries, 46 different runners, 14 running more than one course. The web results did not calculate composite race winners but Stina Bridgeman won red, Cameron Ferguson won brown and Zack Butler won green.



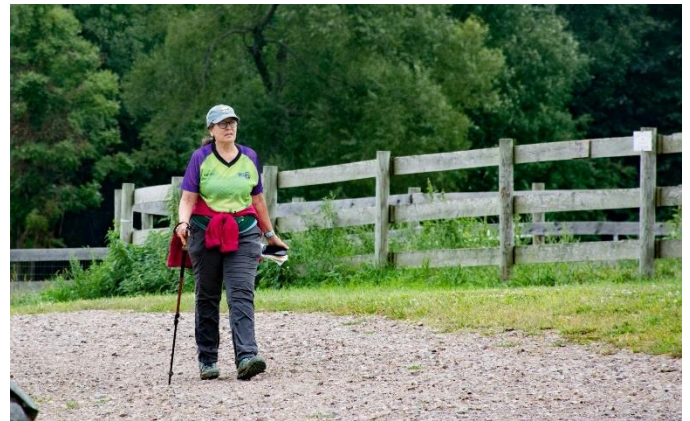
Liam and Ian Webber

Steve Tylock set all the six fine courses. Dick Detwiler printed our maps. Zack Butler and Nancy Burgey did registration and greeting. Tyler Borden and Michael Lyons did the timing along with our aging battery. Don Winslow, Richard Burgey and Stina Bridgeman picked up the 38 flags. Tom McNelly was meet director with help from Heidi Hall.

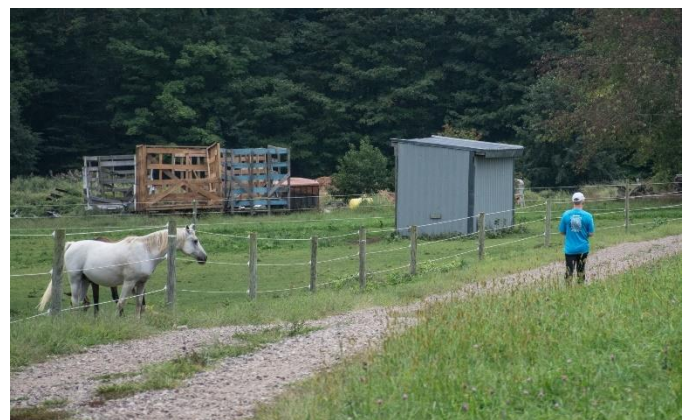
Alasa Farms

September 12, 2021

The rain held off and we had a great turnout for our courses at Alasa Farms. The terrain and contours made for technically challenging courses yet again. We had a great crew of new orienteers come out from Cornell. After they got their feet wet (maybe literally) on the beginner course, many of them headed back out on the intermediate course! With 45 starts, we had a great mix of new and familiar faces. I'm happy to be meeting in person again!



Laurie Hunt heading to the start...



Don Winslow being watched heading to the start...

Thanks to Doug for course setting and helping out with some co-meet directing. Thanks to Nancy, Kathy and Patty at registration, Tyler at timing, Don for greeting, and Jim, Patty, Richard, Ed, Andrew and Doug for flag pickup. All our great volunteers make the meet directing job a pleasure!

Genesee County Park

September 25, 2021

It was a great day for orienteering at Genesee County Park. We had runners from Syracuse and Buffalo attend the event as well as lots of ROC members. Linda designed three separate courses using the same 21 controls.

A beginner course covered 1.8K and had 9 controls. The Score O course included all 21 controls that could be taken in any order and a 60 minute time limit. The highest possible point total was 650 points with a ten point penalty for every minute of overtime. The advanced long course was 6.8K and included all the controls but in a designated order. It was a fine workout for all with only one runner hitting the 1 hour goal.



Nancy Burgey at the registration table

A beginner's clinic was held before the event with 8 people attending. Linda and Kathy Bannister did the instruction and short map hike.

The Genesee County Park and Forest is an enthusiastic supporter of orienteering and offers a map hike to school and youth groups throughout the year.

Many thanks to helpers Richard Burgey, Nancy Burgey, Daniel Burgey, Tyler Borden, Stina Bridgeman, Doug Hall, Heidi Hall and Jim Borden.



Linda Kohn and Louise Cook

It was great to see long time club member Louise Cook after a long rehab on and injury sustained at Rotary Sunshine Camp a couple of years ago.

Rick & Linda
Meet Director and Course Setter

Mendon Ponds Park

October 10, 2021

No shelter, so we set up shop in a meadow on Canfield Road in the park's NE corner, barely avoiding dropping black walnuts. Zack Butler set out the 6 challenging courses and managed to place all the flags in a mere 2:08 then ran the well-attended Skills Workshop. We had a lost dibber out on the course but miraculously it was actually found.



Rob Stevens and Zack Butler

Tom McNelly was meet director with help from his brother Dan. Don Winslow greeted. Nancy Burgey heroically did the registration by herself (with some help from grandson, Daniel). Tyler Borden did the timing with his aging battery pack. Richard Burgey, Vince Cassano, James Borden and Gary Maslanka collected all the flags. Dick Detwiler printed our maps. Great weather, good turnout (enough to tax our map supply): 10 Beginners, 8 Novices, 8 Intermediates, 17 Short Advanced, 14 Long Advanced.

Winners:

Cameron Ferguson on the Long Advanced, Timothy Dobretsov on the Short Advanced, Mike Sharpe on Intermediate, David Dillon on the Novice and Alexandra Dobretsov on the Beginner Course.

Durand Eastman Park

October 17, 2021

The sun and the wind were both present for Durand East on October 17. Many thanks to Linda Kohn for setting out almost all of the controls in the rain the day before so she and Rick could travel to Pennsylvania for Karl and Mary Kolva's memorial service the day of the meet.

Things went smoothly with the help of the following volunteers:

Timing and all things computer related- Tyler Borden

Registration- Nancy Burgey and Ed Deller

Greeter and Instructor- Don Winslow

Flag Pick-up - Jim Borden, Richard Burgey, Patty Borden, Stina Bridgeman, Jim Pamper, Andrew Beckman

Printing- Dick Detwiler



Anne Schwartz at the start table

My apologies to all on the Intermediate course, whose first control had them skidding, then wading through a mud hole! Lots of expletives on that one upon their return ! Other than that, it was a great day to enjoy the outdoors.

-Anne Schwartz, meet director

Mendon Ponds Night-O

November 6, 2021

It was a dark and starry night- perfect for a night-O! 42 participants, many of them masked while inside, (thank you 😊), waited eagerly for the fun to begin. Most memorable caveat mentioned before the start: "Don't get hit by a deer!". Truly, this did happen about 15 years ago, so it was said seriously. Fortunately, everyone returned within the allotted 75 minutes, no worse for wear except a bit of mud.



Masked Orienteer???

Many thanks go to the following for a wonderful event: Course setter: Richard Burgey; Control set-out: Richard B, Linda Kohn. Rick Worner Registration: Nancy Burgey; Greeter: Don Winslow Timing: Tyler Borden, Nancy Burgey; Flag pick-up: Andrew Beckmann, Mark Salas, Joel Shore, Zack Butler; Meet director: Anne Schwartz

Powder Mills Park Night-O

November 13, 2021

For the finale of the 2021 Orienteering season, we held a 2nd Night-O one week after the last one. Everyone was excited to come out and try a Night-O, some for the first time or others to see if they could do better than last week. Some had never been in the park before. It only happened because of some dedicated volunteers.

Course designer – Richard Burgey and Nancy Burgey (computer work)
Control Set out – Richard Burgey with help from Vince Cassano, his wife and pup
Map updates and course consultant – Linda Kohn
Map Printer – Dick Detwiler
Meet Director – Nancy Burgey with help from Richard, Linda and Daniel Burgey
Registration – Laurie Hunt (stepped up last minute!)
Timing – Tyler Borden
Control Pick-up: Stina Bridgeman, Gary Maslanka, Andrew Beckmann, Steve Tylock, and Eric Barbehenn
Donna Boots brought a bag of apples for us to enjoy. Thank you, they were tasty.



Studying quickly before the start...

Thanks to everyone for pre-registration, making the registration process run smoothly. There were 26 individuals and groups that went out and everyone came back. Everyone had a great time and with many discussions about route choices and stories were swapped.

A Blast from the Past Answer...

This unfortunate orienteer was Dick Detwiler!

Puzzle Time

#5 and #15

Remembering Karl and Mary Kolva

October 17, 2021

Rick and Linda had a very interesting weekend in Hershey PA. Very impressive setting with Hershey Hotel complex, gardens and amusement park right in the center of town. They attended a military burial ceremony at Indiantown Gap National Military Cemetery complete with a 21 gun salute for ROC members, Karl and Mary Kolva. Karl was a pilot in WWII and a longtime member of our orienteering club. Karl was born in nearby Halifax, Pennsylvania.



FIRST CLASS



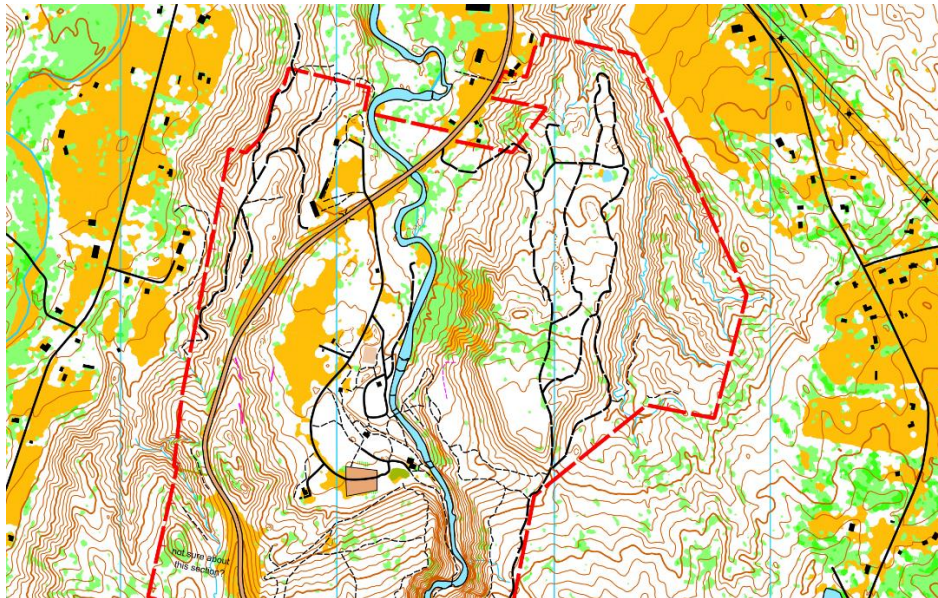
4800 Eddy Ridge Road
Marion, NY 14505



Sergey and Tatyana Dobretsov
at Mendon Ponds

In the next issue of The Wild Times...

- Read about our new spring events and more about the members of ROC!
- Submissions are due by March 1st, 2022



A teaser of what may be coming for ROC! Base map of northern Stony Brook SP created by Tom Rycroft