

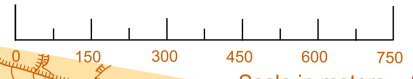
# Mendon Ponds Park

Scale: 1:15000

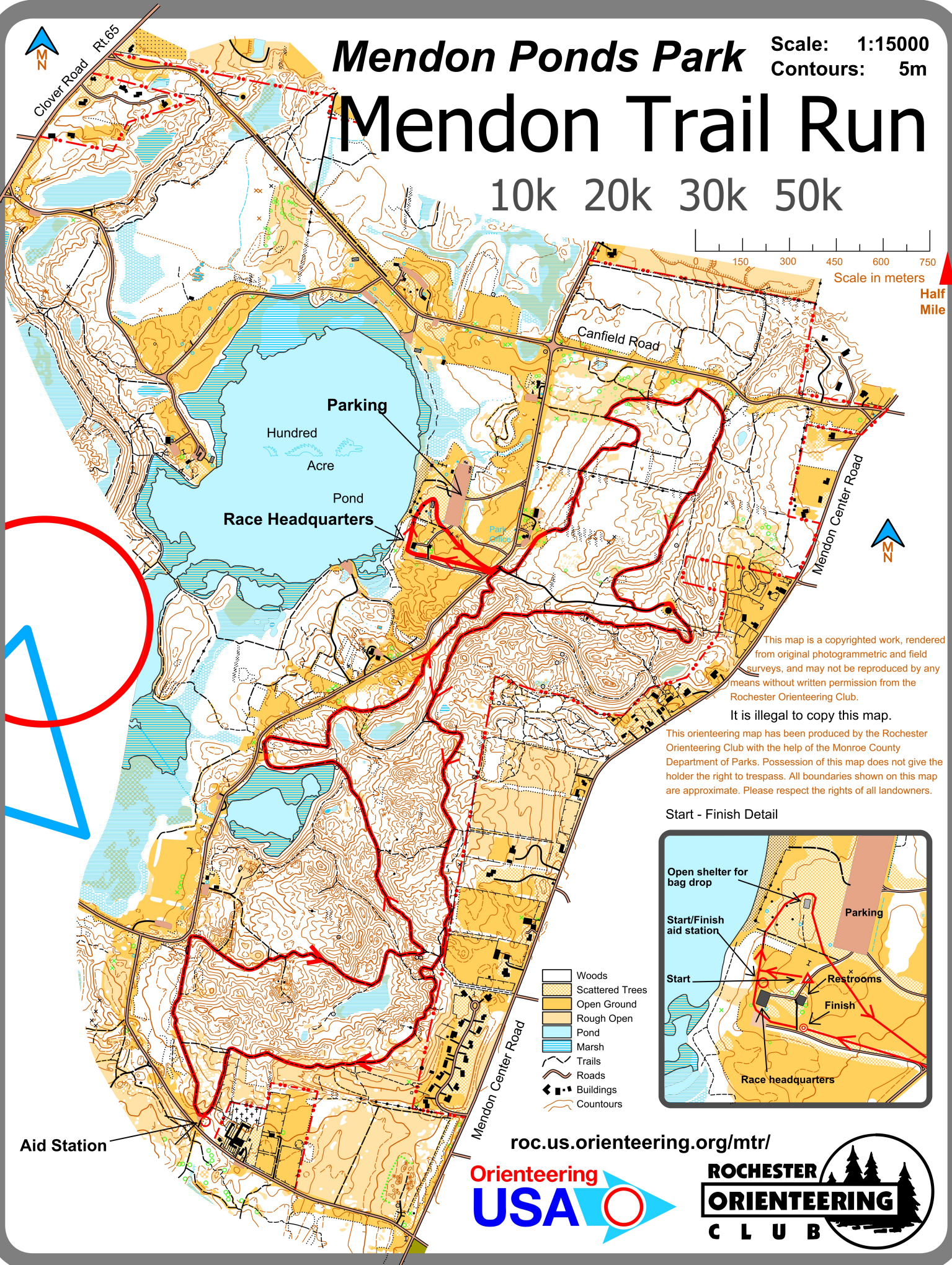
Contours: 5m

# Mendon Trail Run

10k 20k 30k 50k



Scale in meters  
Half Mile



Parking  
Hundred Acre Pond  
Race Headquarters

This map is a copyrighted work, rendered from original photogrammetric and field surveys, and may not be reproduced by any means without written permission from the Rochester Orienteering Club.

It is illegal to copy this map.

This orienteering map has been produced by the Rochester Orienteering Club with the help of the Monroe County Department of Parks. Possession of this map does not give the holder the right to trespass. All boundaries shown on this map are approximate. Please respect the rights of all landowners.

### Start - Finish Detail



- Woods
- Scattered Trees
- Open Ground
- Rough Open
- Pond
- Marsh
- Trails
- Roads
- Buildings
- Contours

Aid Station

[roc.us.orienteering.org/mtr/](http://roc.us.orienteering.org/mtr/)

